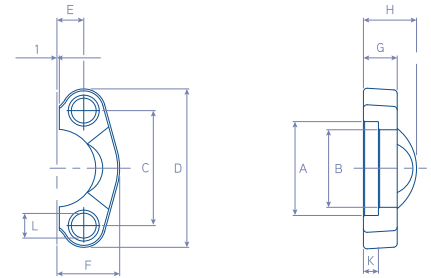




Split Flange 3000 PSI (code 61)

88.5300.
ISO 6162-1 / SAE J518



REFERENCE	size	A	B	C	D	E	F	G	H	K	L	Bolts	
		inch	mm	mm	mm	mm	mm	mm	mm	mm	mm	mm	M
88.5300.08	1/2"	31	24	38	54	9	23	13	19	6	9	M8	5/16"
88.5300.12	3/4"	39	32	48	65	11	26	14	22	6	11	M10	3/8"
88.5300.16	1"	45	38	52	70	13	29	16	24	7	11	M10	3/8"
88.5300.20	1.1/4"	52	44	59	79	15	36	14	22	7	12	M10	7/16"
88.5300.24	1.1/2"	61	51	70	94	18	41	16	25	7	15	M14	1/2"
88.5300.32	2"	72	63	78	102	21	48	16	26	9	14	M12	1/2"

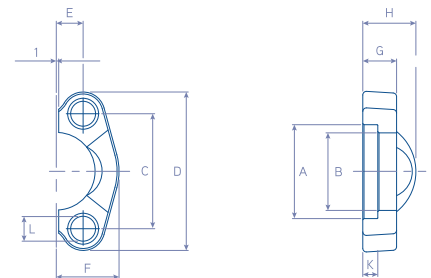
MATERIAL: Carbon Steel

FINISH: Chromium-(VI) Free plating /
ROHS compliant

VERSIONS: Uncut flange (88.5302)

Split Flange 6000 PSI (code 62)

88.5600.
ISO 6162-1 / SAE J518



REFERENCE	size	A	B	C	D	E	F	G	H	K	L	Bolts	
		inch	mm	mm	mm	mm	mm	mm	mm	mm	mm	mm	M
88.5300.08	1/2"	33	25	41	56	9	24	16	22	7	9	M8	5/16"
88.5300.12	3/4"	42	33	51	71	12	30	19	28	8	11	M10	3/8"
88.5300.16	1"	48	39	57	81	14	35	24	33	9	13	M12	7/16"
88.5300.20	1.1/4"	55	44	67	95	16	39	27	38	10	15	M14	1/2"
88.5300.24	1.1/2"	64	52	79	113	18	48	30	43	12	17	M16	5/8"
88.5300.32	2"	80	68	97	133	22	57	37	52	12	21	M20	3/4"

MATERIAL: Carbon Steel

FINISH: Chromium-(VI) Free plating /
ROHS compliant

VERSIONS: Uncut flange (88.5602)